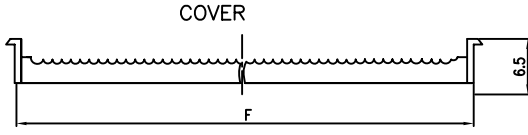
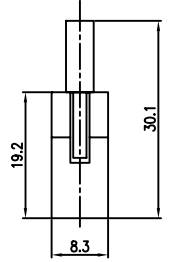
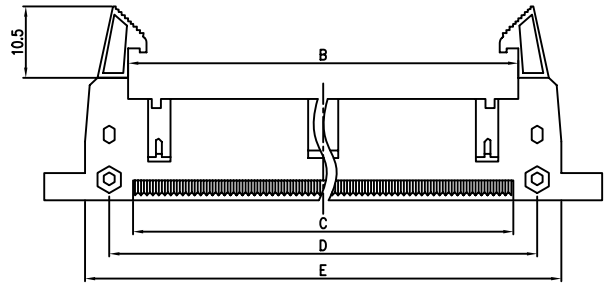
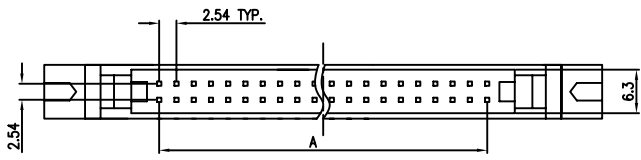


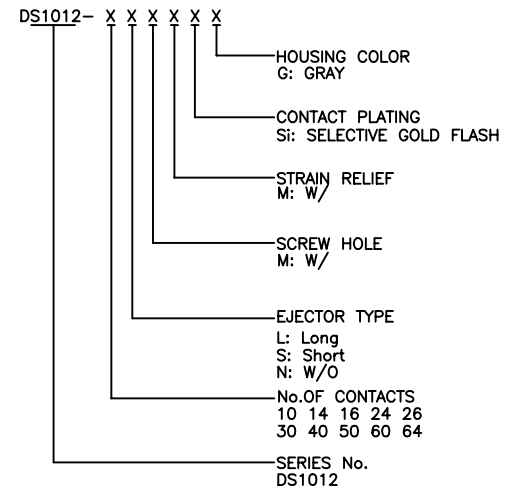
REV.	DESCRIPTION	DRAWN	CHECKED	APPROVED
A	NEW RELEASE	LJH 04/27/05'		



NOTES:

- MATERIAL
 - INSULATOR:THERMOPLASTIC(UL 94V-0).
 - CONTACT: COPPER ALLOY.
- SPECIFICATION
 - STORAGE TEMPERATURE:-20-70°C.
 - OPERATING TEMPERATURE:0-85°C.
 - CONTACT RESISTANCE:20mΩ max.(initial).
 - INSULATION RESISTANCE:1000MΩ min.
 - DIELECTRIC WITHSTANDING VOLTAGE:AC 500V PER MINUTE.

- PART NUMBER: DS1012
- PRODUCT NUMBER CODE:



Position	Dimension					
	A	B	C	D	E	F
10	10.18	18.00	15.30	21.85	32.00	17.20
14	15.24	23.08	20.36	26.93	37.08	22.28
16	17.78	26.62	22.92	29.47	39.62	24.82
20	22.86	30.70	28.00	34.65	44.70	29.90
24	27.94	35.76	33.08	39.63	49.78	34.98
25	30.48	38.32	35.02	42.17	52.32	37.52
30	35.56	43.40	40.70	47.25	67.40	42.60
34	40.64	48.48	45.78	52.33	62.48	47.68
40	48.26	56.10	53.40	59.95	70.10	55.30
50	60.96	66.60	66.10	72.65	82.80	66.00
60	73.66	81.50	78.80	85.35	95.50	80.70
64	78.74	86.58	83.88	90.43	100.58	85.75

GENERAL TOLERANCE		ANGLE TOLERANCE		PROJECTION		TITLE	IDC SHROUDED HEADER
X.	±0.60	X.	±5°	UNITS	mm	MATES WITH PITCH 1.27mm FLAT CABLE	
.X	±0.38	.X	±3°	SHEET SIZE	A4	SERIES	DS1012 SERIES
.XX	±0.25	.XX	±2°				
DRAWING TYPE		CUSTOMER					
SCALE		1:1	SHEET	1 OF 1			
DRAWING NO.		C-DS1012-XXXXXX					